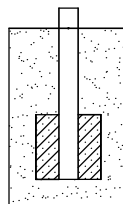
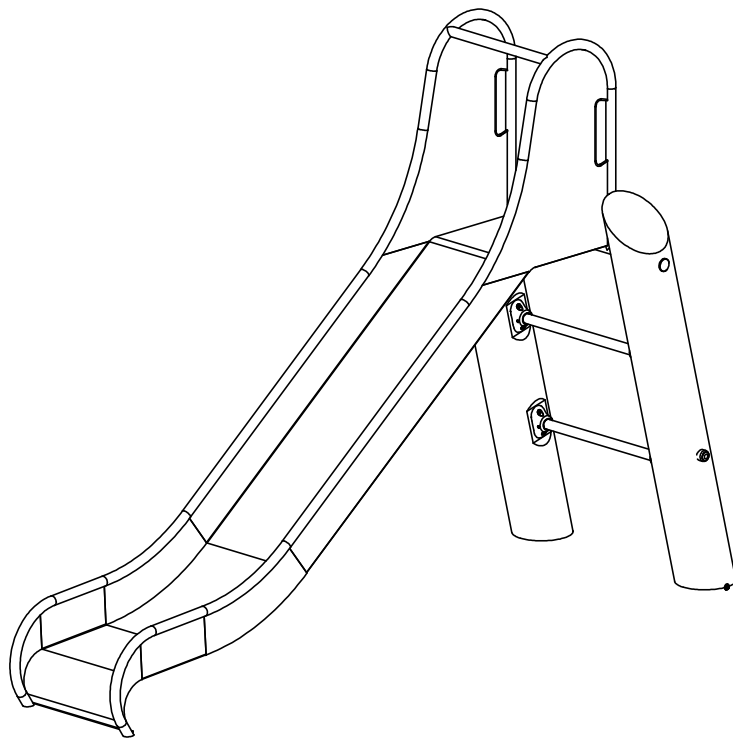
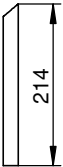
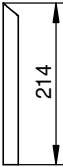
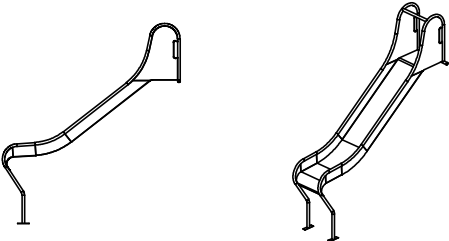


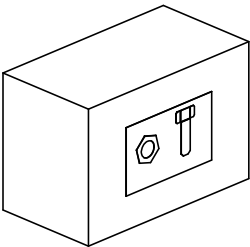


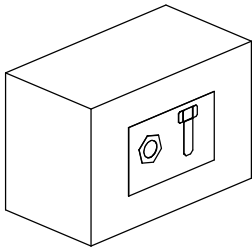


8156

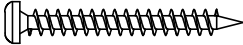



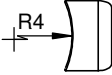


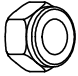
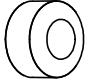
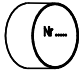

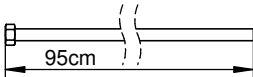


8156N

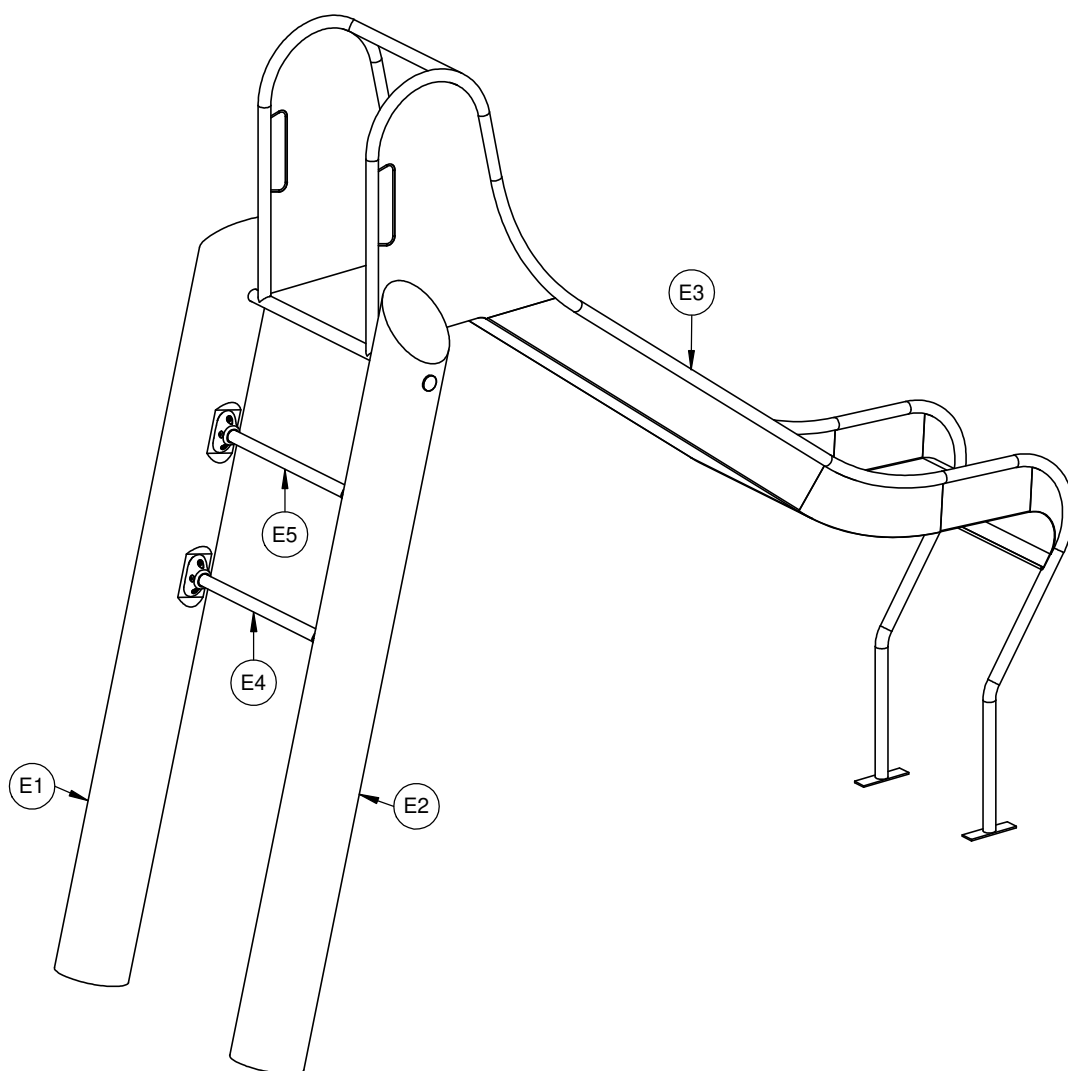
NR	ELEMENT	8156N
E1	 D8156_1N	1
E2	 D8156_2N	1
E3		1
E4		1
E5		1
E6		1



8156N

Nr	Element			Σ
1		-	S6x60	2
2		-	W6x60	1
21		DIN 125	8x16	1
58		-	LOCTITE	1
77		-	K3_d30_A89 _G	1
90		DIN 125	16x30	2
109		DIN 913	10x10	2
164		DIN 985	M16	1
213		-	Z_NA_1	1
214		-	Z_NA_2	1
229		-	Z_R_42	2
288		-	S49_8100_0	1

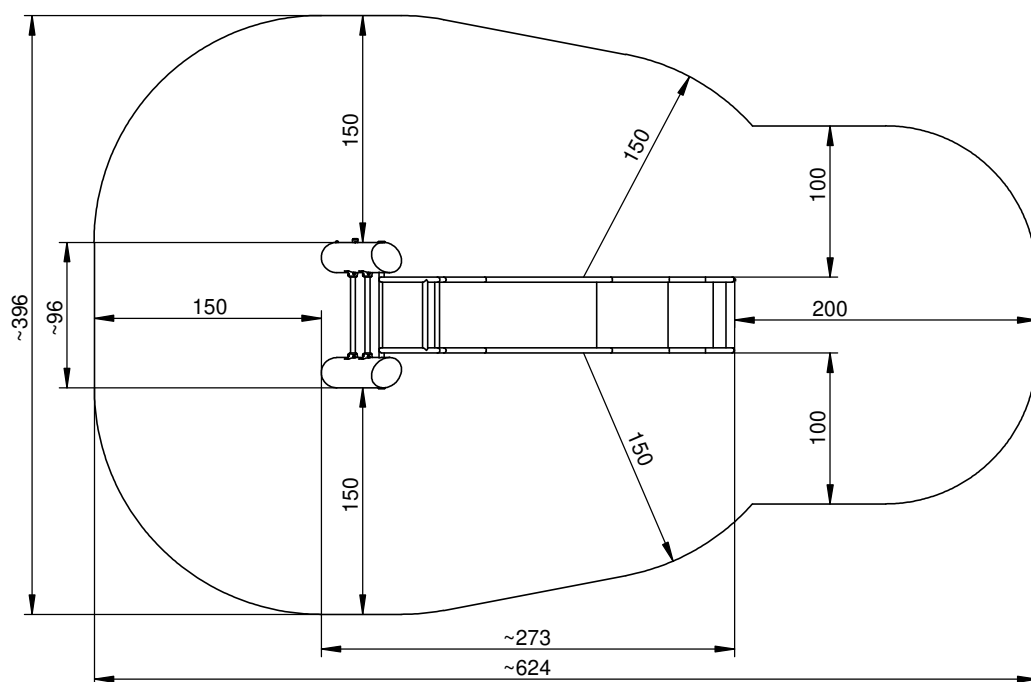
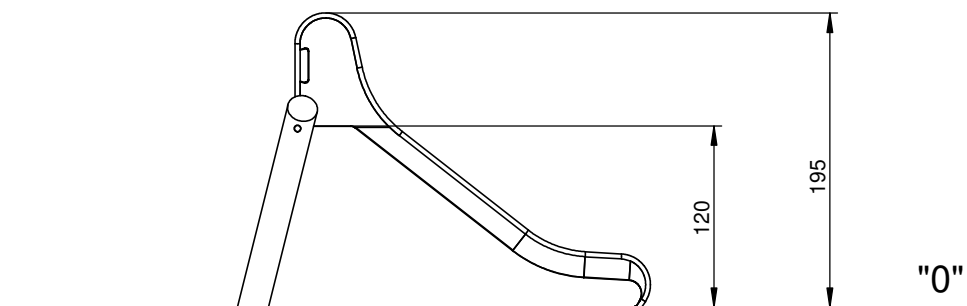
8156N



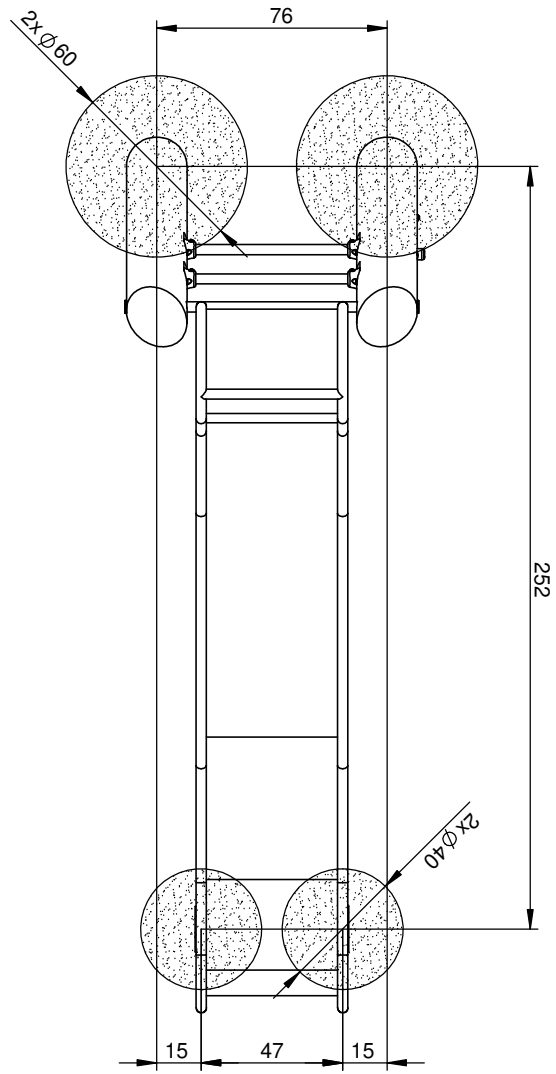
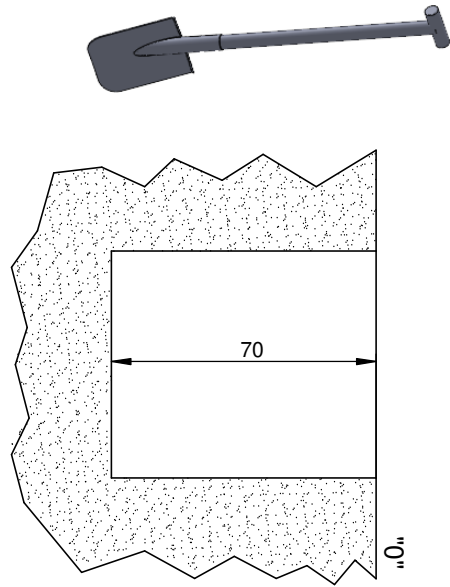
8156N

ENG: Due to the irregular shapes of natural robinia wood trunks, all dimensions provided in the documentation may slightly vary from the actual dimensions of the product.

PL: Z uwagi na nieregularne kształty naturalnych pni drewna robinii, wszystkie wymiary podane w dokumentacji mogą nieznacznie odbiegać od rzeczywistych wymiarów produktu.

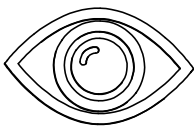


8156N



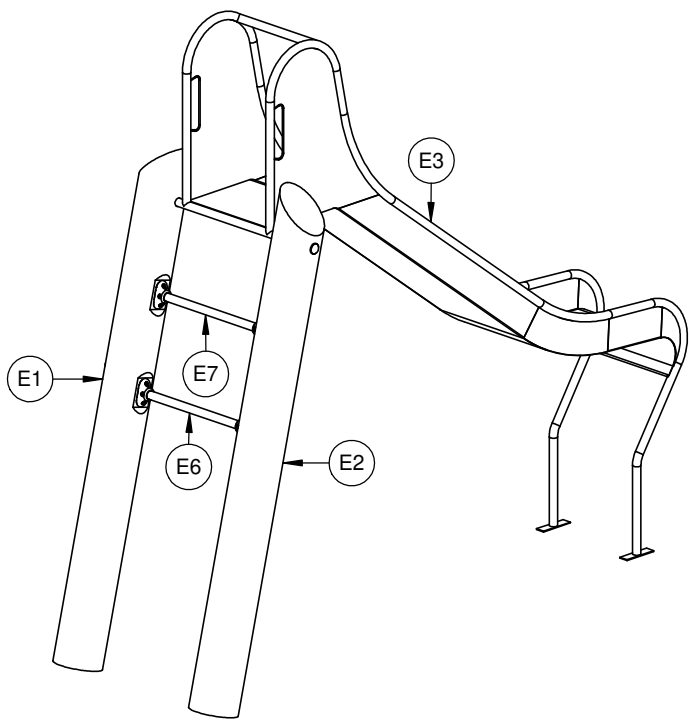
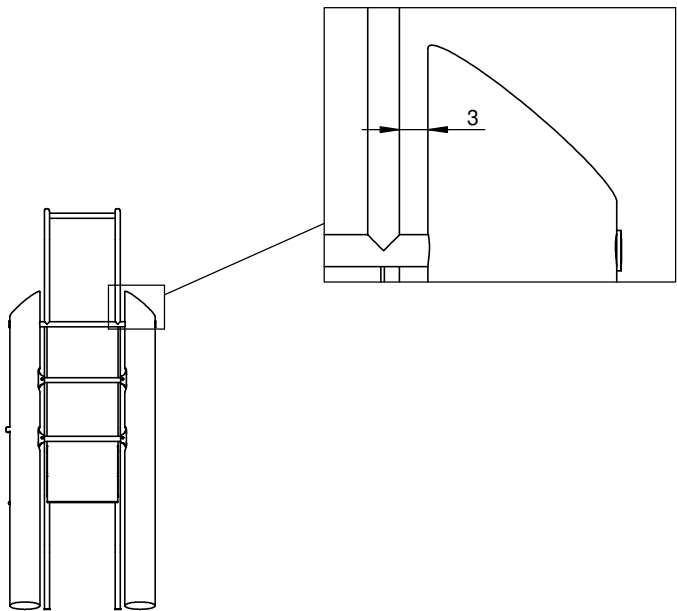
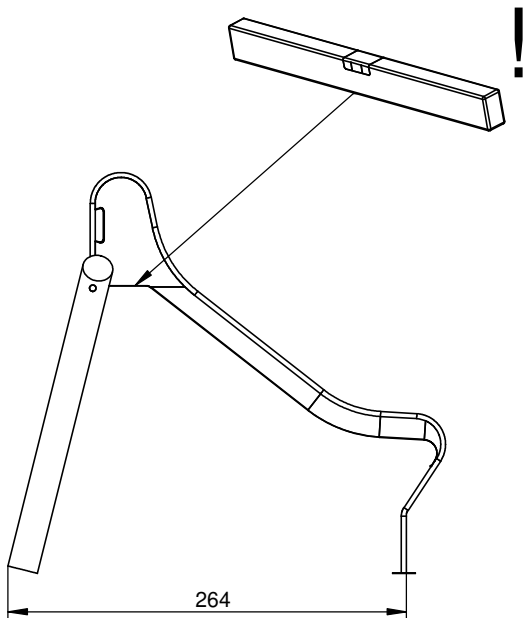
1

8156N



INST_81_0_49

INST_81_2



2

8156N

3

B25 0,3m

min. 48H

